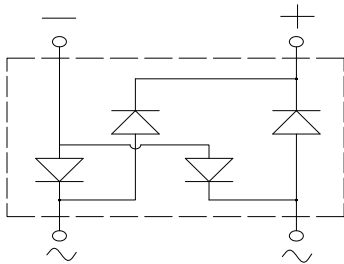
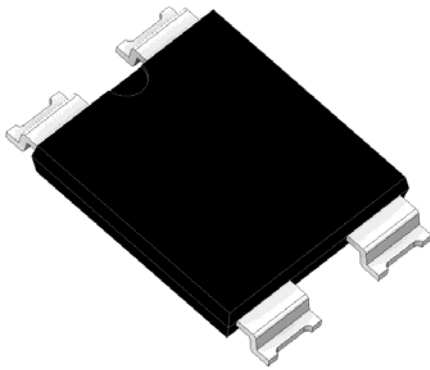


Bridge Rectifiers



Features

- UL recognition, file #E313149
- Glass passivated chip junction
- Ideal for automated placement
- High surge current capability
- Meets MSL level 1, per J-STD-020, LF maximum peak of 260 °C

Typical Applications

General purpose use in AC/DC bridge full wave rectification for SMPS, lighting ballaster, adapter, battery charger, home appliances, office equipment, and telecommunication applications.

Mechanical Data

- **Package:** YBS6
Molding compound meets UL 94 V-0 flammability rating, RoHS-compliant, Halogen-free
- **Terminals:** Tin plated leads, solderable per J-STD-002 and JESD22-B102
- **Polarity:** As marked on body

■Maximum Ratings (Ta=25°C Unless otherwise specified)

PARAMETER	SYMBOL	UNIT	YBSN150005A	YBSN15001A	YBSN15002A	YBSN15004A	YBSN15006A	YBSN15008A	YBSN15010A
Device marking code			YBSN150005A	YBSN15001A	YBSN15002A	YBSN15004A	YBSN15006A	YBSN15008A	YBSN15010A
Maximum Repetitive Peak Reverse Voltage	VRRM	V	50	100	200	400	600	800	1000
Maximum RMS Voltage	VRMS	V	35	70	140	280	420	560	700
Maximum DC blocking Voltage	VDC	V	50	100	200	400	600	800	1000
Average rectified output current @60Hz sine wave, R-load, Tc=95°C	Io	A	15						
Forward Surge Current (Non-repetitive)@60Hz Half-sine wave, 1 cycle, Tj=25°C	IFSM	A	350						
Forward Surge Current (Non-repetitive)@1ms, square wave, 1 cycle, Tj=25°C			700						
Current squared time @1ms≤t≤8.3ms Tj=25°C, Rating of per diode	I²t	A²s	508						
Storage temperature	Tstg	°C	-55 ~ +150						
Junction temperature	Tj	°C	-55 ~ +150						



YBSN150005A THRU YBSN15010A

■ Electrical Characteristics (T_a=25°C Unless otherwise specified)

PARAMETER	YMBO	UNIT	TEST CONDITIONS	YBSN150005A	YBSN15001A	YBSN15002A	YBSN15004A	YBSN15006A	YBSN15008A	YBSN15010A
Maximum instantaneous forward voltage drop per diode	V _F	V	I _{FM} =7.5A				1.0			
Maximum DC reverse current at rated DC blocking voltage per diode	I _R	μA	T _j =25°C				5			
			T _j =125°C				100			
Typical junction capacitance	C _j	pF	Measured at 1MHz and Applied Reverse Voltage of 4.0 V.D.C				110			

■ Thermal Characteristics (T_a=25°C Unless otherwise specified)

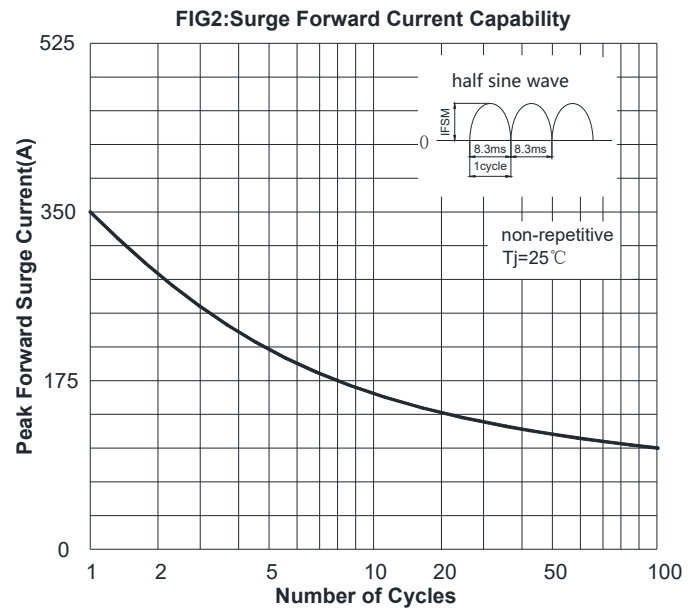
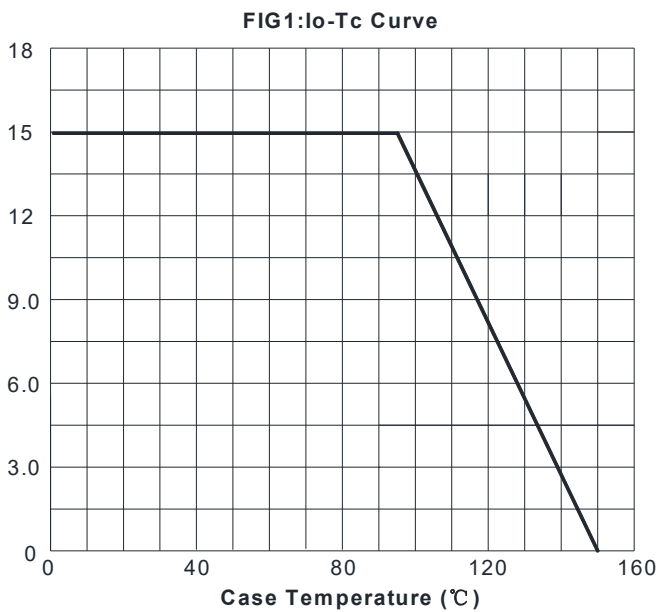
PARAMETER	SYMBOL	UNIT	YBSN150005A	YBSN15001A	YBSN15002A	YBSN15004A	YBSN15006A	YBSN15008A	YBSN15010A
Typical Thermal Resistance	Between Junction and Ambient	R _{θJ-A}	°C/W				50		
	Between Junction and Lead	R _{θJ-L}					10		
	Between Junction and Case	R _{θJ-C}					2		

Note: Thermal Resistance mounted on P.C.B with 30mm*15mm*1.6mm

■ Ordering Information (Example)

PREFERRED P/N	PACKING CODE	UNIT WEIGHT(g)	MINIMUM PACKAGE(pcs)	INNER BOX QUANTITY(pcs)	OUTER CARTON QUANTITY(pcs)	DELIVERY MODE
YBSN150005A - YBSN15010A	F1	Approximate 0.96	1500	/	21000	13" Reel

■ Characteristics (Typical)





YBSN150005A THRU YBSN15010A

FIG3: Typical Forward Voltage

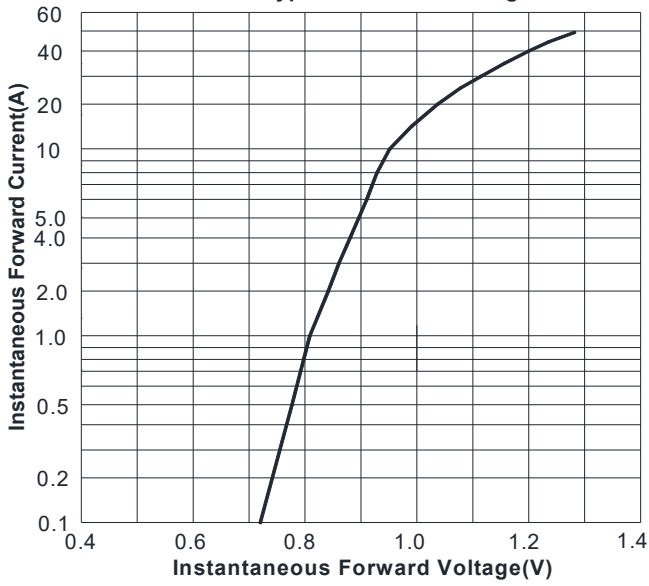
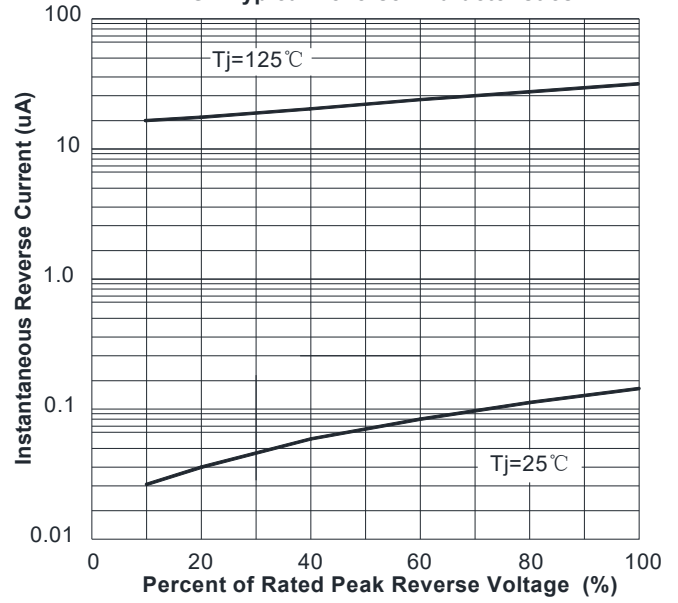
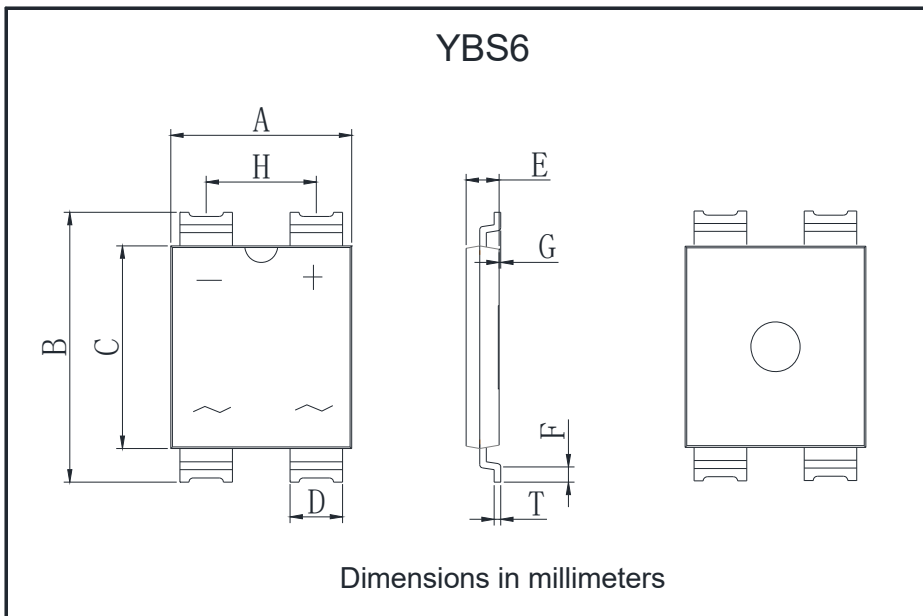


FIG4: Typical Reverse Characteristics



■ Outline Dimensions

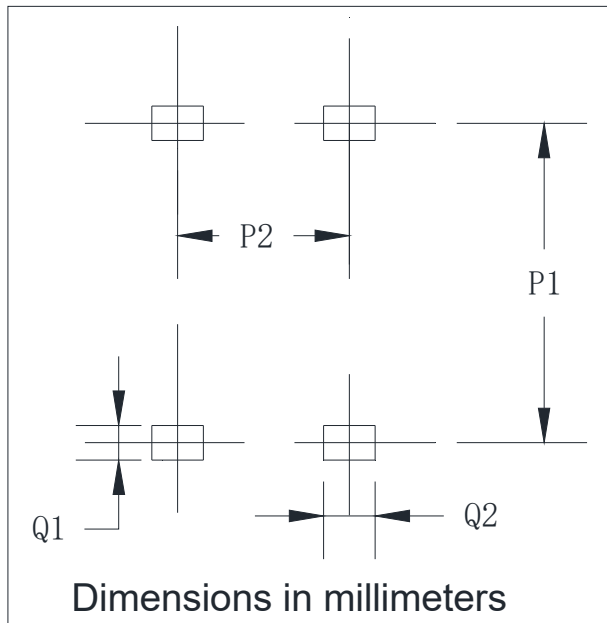


YBS6		
Dim	Min	Max
A	10.70	11.30
B	15.85	16.65
C	11.70	12.30
D	3.05	3.35
E	1.80	2.20
F	0.70	1.10
G	0	0.20
H	6.55	6.85
T	0.35	0.55



YBSN150005A THRU YBSN15010A

■ Suggested pad layout



YBS6	
Dim	Min
P1	15.50
P2	6.70
Q1	1.00
Q2	3.20



YBSN150005A THRU YBSN15010A

Disclaimer

The information presented in this document is for reference only. Yangzhou Yangjie Electronic Technology Co., Ltd. reserves the right to make changes without notice for the specification of the products displayed herein to improve reliability, function or design or otherwise.

The product listed herein is designed to be used with ordinary electronic equipment or devices, and not designed to be used with equipment or devices which require high level of reliability and the malfunction of which would directly endanger human life (such as medical instruments, transportation equipment, aerospace machinery, nuclear-reactor controllers, fuel controllers and other safety devices), Yangjie or anyone on its behalf, assumes no responsibility or liability for any damages resulting from such improper use of sale.

This publication supersedes & replaces all information previously supplied. For additional information, please visit our website [http:// www.21yangjie.com](http://www.21yangjie.com) , or consult your nearest Yangjie's sales office for further assistance.